

Social, Behavioral and Economic Sciences at NSF

November 2022

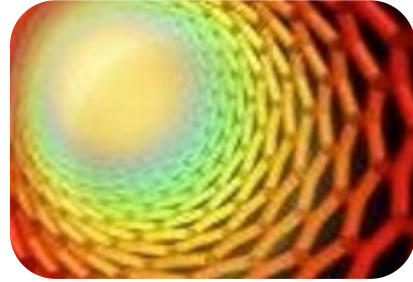
NSF Grants Conference

Jeremy Koster, Ph.D.

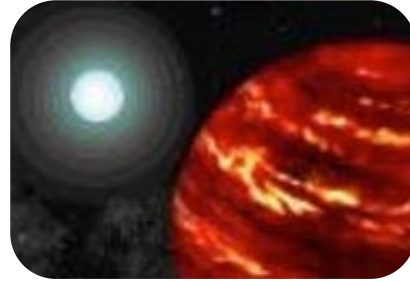
NSF Supports Multiple STEM Fields



Biological Sciences



Engineering



**Mathematical &
Physical Sciences**



**Computer &
Information Science &
Engineering**



**Geosciences (including
Polar Programs)**



Integrative Activities



**Education & Human
Resources**



**Social, Behavioral &
Economic Sciences
(SBE)**

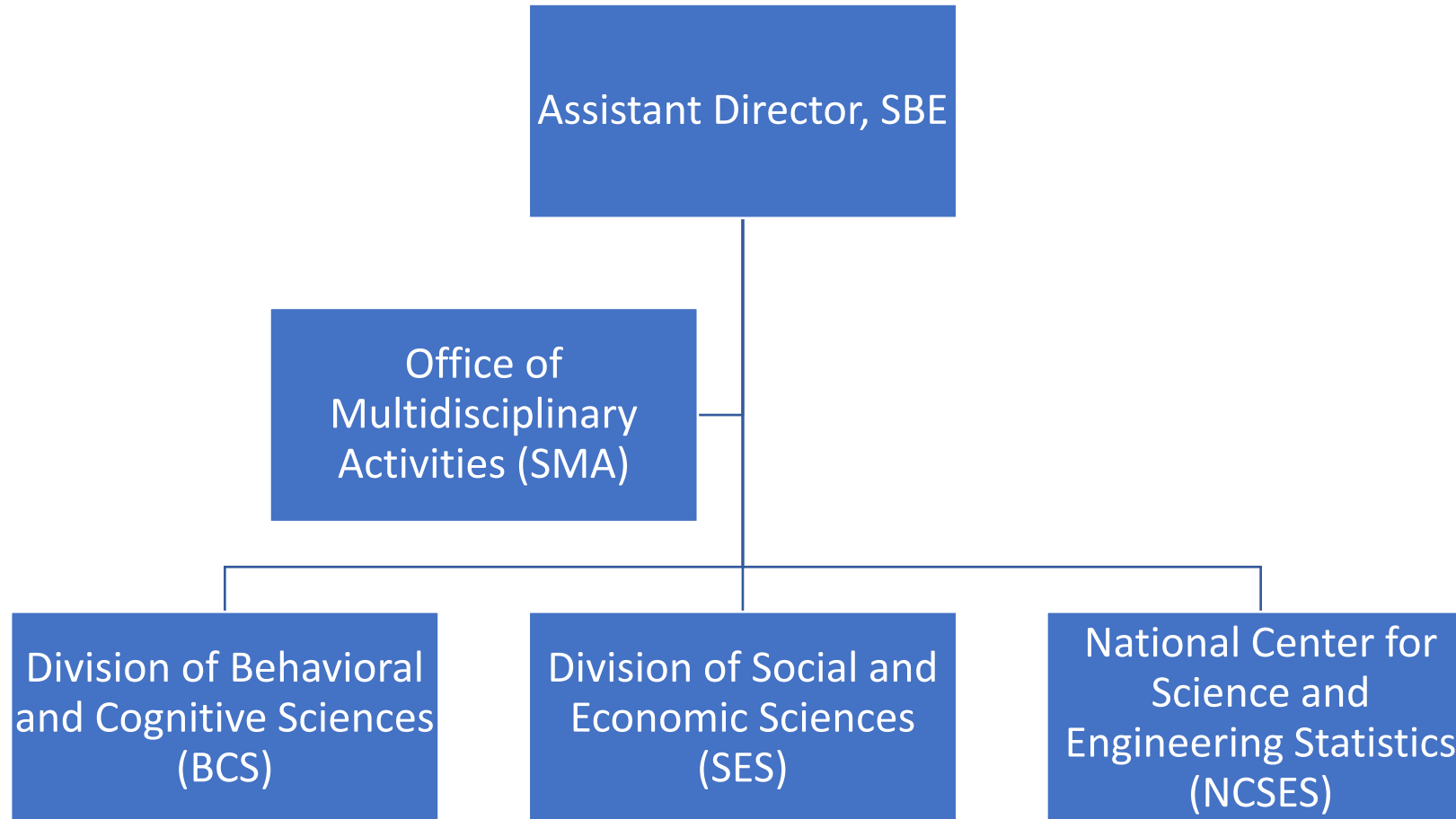


**International Science
and Engineering**

What is SBE?

- NSF's Directorate for Social, Behavioral and Economic Sciences
- SBE Sciences explore human behavior, psychology, and social organizations.
- SBE scientists promote the progress of science by developing and employing rigorous methods to discover fundamental principles of human behavior and cognition at levels from cells to societies and across space and time.
- SBE is also the home of the government statistical agency that measures STEM-related outcomes in the USA:
National Center for Science and Engineering Statistics (NCSES)

How SBE is Organized



SBE By The Numbers (FY2021)

- **\$254M**: New Award Obligations
- **3,956**: Proposal decisions made
- **918**: New awards made
- **23%**: Funding rate
- **\$277K**: Mean award size

Source: NSF By the Numbers: <https://beta.nsf.gov/about/about-nsf-by-the-numbers>

SES Research Funding Programs

- Accountable Institutions and Behavior (AIB)
- Decision, Risk and Management Sciences (DRMS)*
- Economics*
- Law and Science
- Methodology, Measurement and Statistics (MMS)*
- Science of Organizations (SoO)
- Science of Science: Discovery, Communication, and Impact (SoS:DCI)
- Science and Technology Studies (STS)*
- Secure and Trustworthy Cyberspace (SaTC, joint with CISE.)
- Security and Preparedness
- Sociology

* Programs that support Doctoral Dissertation Research Improvement (DDRI) grants

BCS Research Funding Programs

- Archaeology and Archaeometry*
- Biological Anthropology*
- Cognitive Neuroscience
- Cultural Anthropology*
- Developmental Sciences
- Human-Environment and Geographical Sciences (HEGS)*
- Human Networks and Data Science (HNDS)
- Linguistics/Dynamic Language Infrastructure*
- Perception, Action and Cognition (PAC)
- Science of Learning and Augmented Intelligence
- Social Psychology
- Strengthening American Infrastructure (SAI)

* Programs that support Doctoral Dissertation Research Improvement (DDRI) grants

BCS Research Funding Programs

- Archaeology and Archaeometry*
- Biological Anthropology*
- Cognitive Neuroscience
- Cultural Anthropology*
- Developmental Sciences
- Human-Environment and Geographical Sciences (HEGS)*
- **Human Networks and Data Science (HNDS)**
- Linguistics/Dynamic Language Infrastructure*
- Perception, Action and Cognition (PAC)
- Science of Learning and Augmented Intelligence
- Social Psychology
- **Strengthening American Infrastructure (SAI)**

* Programs that support Doctoral Dissertation Research Improvement (DDRI) grants

Leveraging data and network science,
including geospatial data and infrastructure

Human Networks and Data Science (HNDS)

View Guidelines

[22-505](#)

- Two tracks – both with budgetary maximums of \$1.2 million
 - HNDS-Infrastructure – development of data resources and analytic methods
 - HNDS-Research – advance theory in a core SBE discipline by the application of data and network science methods.
 - “The HNDS-R program will co-review and co-fund projects with other SBE programs.”
- Webinar link from last fall: <https://beta.nsf.gov/funding/opportunities/human-networks-and-data-science-hnds/announcements/video-and-slides-nov-30>

<https://beta.nsf.gov/funding/opportunities/human-networks-and-data-science-hnds>

Human-centered, interdisciplinary research
on infrastructure, broadly defined

Strengthening American Infrastructure (SAI)

View Guidelines

22-564

- “how basic knowledge of human reasoning, decision-making, governance, and social and cultural processes enables efforts to envision, build, and maintain effective infrastructure that improves lives.
- Must forefront SBE disciplinary expertise (March webinar: click [here](#))
- Three tracks: Research grants (up to \$750,000), Planning grants (up to \$150,000, and Conference grants (up to \$50,000).

<https://beta.nsf.gov/funding/opportunities/strengthening-american-infrastructure-sai-1>

SMA Research Funding Programs

- SBE Research Experience for Undergraduates (REU) Sites
- SBE Postdoctoral Research Fellowships (SPRF)
- [Build and Broaden 3.0 \(B2 3.0\)](#)
- Ethical and Responsible Research (ER2)

Build and Broaden: Enhancing Social, Behavioral and Economic Science Research and Capacity at Minority-Serving Institutions (B2)

[View guidelines](#)

[22-638](#)

The [Build and Broaden 2.0 solicitation \(NSF 22-638\)](#) is a funding opportunity within the National Science Foundation's Directorate for Social, Behavioral and Economic Sciences (SBE).

Build and Broaden 2.0 supports fundamental research in the SBE sciences by scholars at minority-serving institutions (MSIs). Proposals are invited from:

- Single principal investigators (PIs) based at MSIs
- Multiple co-investigators from one or more MSIs
- Principal Investigators not affiliated with MSIs, but who collaborate with PIs, co-PIs, or senior personnel from MSIs.
 - In this case, proposals must describe — as a primary goal of the proposed work — how the project will foster research partnerships or capacity-building with at least one MSI.

For questions regarding the Build and Broaden 2.0 solicitation, please contact sbe-buildandbroaden@nsf.gov

SBE Postdoctoral Research Fellowships (SPRF)

View guidelines

23-500

New SBE Postdoctoral Research Fellowship Guidelines to Be Released Soon

September 16, 2022

New guidelines for SBE Postdoctoral Research Fellowships (SPRF) are in preparation and will be released soon. It is anticipated that the next full proposal deadline will be late in 2022, and that deadlines will be in November in 2023 and annually thereafter.

- The program supports supervised postdoctoral opportunities for recent doctoral graduates – must have a host-sponsor
- The program has a track for supporting broadening participation initiatives.

<https://beta.nsf.gov/funding/opportunities/sbe-postdoctoral-research-fellowships-sprf>

SBE in Cross-Directorate Initiatives

What they are:

- “Cross cutting” programs run by program director teams.
- Free-standing review processes

Examples:

- Ecology and Evolution of Infectious Diseases (EEID)
- Dynamics of Integrated Socio-Environmental Systems (DISES)
- Future of Work at the Human Technology Frontier (FW-HTF)
- Signals in the Soil
- Innovations at the Nexus of Food, Energy and Water Systems (INFEWS)
- Major Research Instrumentation

Processes and feedbacks between human and environmental components of a system

Dynamics of Integrated Socio-Environmental Systems (DISES)

[View Guidelines](#)

20-579

- Replaces the Dynamics of Coupled Natural and Human Systems program
- Budget maximum: \$1.6 million
- Commonly funded projects are composed of interdisciplinary teams that focus on complex interactions
- Also funds Research Coordination Networks (RCN)

Supports collaborative NSF-USDA research on dynamic soil processes and soil formation through advances in sensor systems and predictive, process-based and mechanistic modeling.

Signals in the Soil

View guidelines

[22-550](#)

- “Socializing Soil” pillar
- Examples include human decision making and land-use/land-management change; understanding how soil data is understood, interpreted, and acted upon by diverse land managers.
- May include comparisons between sensors and traditional ecological knowledge

<https://beta.nsf.gov/funding/opportunities/signals-soil>

Kinds of Awards, aka “Mechanisms”

- Doctoral Dissertation Research Improvement Grants (DDRIGs)
- EAGER (EARly-concept Grants for Exploratory Research)
- RAPID
- Conference awards
- Research Coordination Networks (RCN)
- CAREER
- Mid-Career Advancement
- Facilitating Research at Primarily Undergraduate Institutions

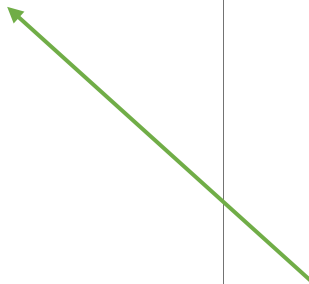
How to Find Programs

- **NSF Funding Search** to look for programs and their past awards.
- **NSF Award Search** (Simple and Advanced) to see what program funded a particular researcher and/or to search award titles and abstracts by keywords.
- **NSF Announcements and Newsletters** to get information on new programs and their outreach efforts like webinars.
- The SBE “**Key to Funding Opportunities**” page.

Using NSF's new Funding Search Tool : beta.nsf.gov/funding/opportunities

The screenshot shows the NSF Funding Search tool interface. The browser address bar displays the URL: `beta.nsf.gov/funding/opportunities?search_api_fulltext=Political%20Science&sort_bef_combine=search_api_relevance_DESC`. The page features a navigation menu with options: Overview, Fund Your Research (selected), NSF-Funded Projects, and Research Directorates & Offices. A search bar contains the text "Political Science" and a search button. Below the search bar, it indicates "13 results for 'Political Science'" and provides an "Export results .csv" link. A "Filter" section contains several dropdown menus: "Limited submissions", "Award type", "Advancing diversity", "Directorate", "Division", and "Education level". At the bottom, there is a checkbox for "Show only NSF-wide/cross-directorate opportunities (1)".

Filter for SBE



The Results Include:

Click Here!

The screenshot shows a web browser window with the URL `beta.nsf.gov/funding/opportunities?search_api_fulltext=Political%20Science&sort_bef_combine=search_api_relevance_DESC&f%5B0%5D=directorate%3A11`. The page displays search results for funding opportunities. The first result is for the 'Security and Preparedness (SAP)' program, which is highlighted by a green arrow pointing from the text 'Click Here!' on the left. The second result is for the 'Accountable Institutions and Behavior (AIB)' program.

Grant Type	Program	Full Proposal Target Date	Additional Upcoming Deadlines
Standard Grant Continuing Grant	Security and Preparedness (SAP) Supports research and research infrastructure on issues broadly related to global and national security, including international conflict and dispute resolution, domestic political instability and civil war, and the security implications of climate change. View guidelines 22-530 Posted December 1, 2021	August 15, 2022	✓ Additional Upcoming Deadlines
Standard Grant Continuing Grant	Accountable Institutions and Behavior (AIB) Supports theoretically motivated research regarding governance-related attitudes, behavior and institutions, including decision-making, elected and appointed political institutions, preference formation and expression, elections, voting and public policy. How to apply to PD 19-118Y Posted August 29, 2019	August 15, 2022	✓ Additional Upcoming Deadlines

Using the Program Page

When is the proposal due?



Who are the program directors?



Click Here!



resolution, domestic political instability and civil war, and the security implications of climate change.

Synopsis

The Security and Preparedness (SAP) Program supports basic scientific research that advances knowledge and understanding of issues broadly related to global and national security. Research proposals are evaluated on the criteria of intellectual merit and broader impacts; the proposed projects are expected to be theoretically motivated, conceptually precise, methodologically rigorous, and empirically oriented. Substantive areas include (but are not limited to) international relations, global and national security, human security, political violence, state stability, conflict processes, regime transition, international and comparative political economy, and peace science. Moreover, the Program supports research experiences for undergraduate students and infrastructural activities, including methodological innovations. The Program does not fund applied research. In addition, we encourage you to examine the websites for the National Science Foundation's Accountable Institutions and Behavior (AIB) and Law and Science (LS) programs.

Program contacts

Paul Huth Program Director	phuth@nsf.gov	(703) 292-2802	SBE/SES
Lee D. Walker Program Director	lwalker@nsf.gov	(703) 292-8760	SBE/SES
Mauricia Barnett Social Scientist	mbarnett@nsf.gov	(703) 292-7309	SBE/SES
Linh Nguyen Program Specialist	linguyen@nsf.gov	(703) 292-7270	SBE/SES

Awards made through this program

[Browse projects funded by this program](#)

2022
August 15 - Target date
August 15, Annually Thereafter

2023
January 15 - Target date
January 15, Annually Thereafter

Program guidelines

Apply to **PD 19-118Y** as follows:

Full proposals submitted via FastLane or Research.gov: [NSF Proposal & Award Policies & Procedures Guide](#) proposal preparation guidelines apply.

Full proposals submitted via Grants.gov: [NSF Grants.gov Application Guide: A Guide for the Preparation and Submission of NSF Applications via Grants.gov](#) guidelines apply.

Alert: Many NSF programs are only accepting proposals in Research.gov or Grants.gov. FastLane may no longer be a submission option. For more information, please visit [Program Descriptions that Require Proposal Preparation and Submission in Research.gov or Grants.gov](#).

Share

Published: August 29, 2019

Advanced Award Search

Security and Preparedness (SAP) x NSF Award Search: Advanced Search x +

nsf.gov/awardsearch/advancedSearch.jsp

National Science Foundation
WHERE DISCOVERIES BEGIN

SEARCH

HOME RESEARCH AREAS FUNDING AWARDS DOCUMENT LIBRARY NEWS ABOUT NSF

Simple Search Advanced Search Popular Searches Download Awards Send Comments Award Search Help

Awards Advanced Search

[Overview of Award Search Features](#)

Awardee Information

Principal Investigator First Name

Principal Investigator Last Name

Include Co-Principal Investigator in name search

Organization

State

Zip Code

Country

Program Information

NSF Organization

Element Code

Reference Code

Any All

Any All

Program

Program Officer

HINT: The "Program" box searches both program element and program reference names and codes.

Additional Information

Keyword

HINT: The Keyword field searches on the title and abstract only.

Search Award Title Only

Award Number

Award Amount

Award Instrument

HINT: Data prior to 1976 may be less complete.

Active Awards Expired Awards

Original Award Date From To

Start Date From To

End Date From To

Search Reset

Award Search Results

Export up to 3,000 Awards: [CSV](#) | [XML](#) | [Excel](#) | [Text](#) [Email this Link](#) | [Export All Results](#)

Sort By: Results size: Table List Page 1 of 4 Displaying 1 - 30 of 119

[Adolescent Information Management with Parents and Siblings](#)
Award Number:1451757; Principal Investigator:Nicole Campione Barr; Co-Principal Investigator:David Schramm, Sarah Killoren; Organization:University of Missouri-Columbia;NSF Organization:BCS Start Date:07/01/2015; Award Amount:\$273,098.00; Relevance:48.0;

[Collaborative Research: Stress, Academic Outcomes, and Health Outcomes among Language Brokers](#)
Award Number:1651128; Principal Investigator:Su Yeong Kim; Co-Principal Investigator:Belem Lopez; Organization:University of Texas at Austin;NSF Organization:BCS Start Date:06/15/2017; Award Amount:\$505,844.00; Relevance:48.0;

[Collaborative Research: Stress, Academic Outcomes, and Health Outcomes among Language Brokers](#)
Award Number:1651138; Principal Investigator:Katharine Zeiders; Co-Principal Investigator;; Organization:University of Arizona;NSF Organization:BCS Start Date:06/15/2017; Award Amount:\$34,053.00; Relevance:48.0;

[Expanding access to webcam-based online data collection for developmental research](#)
Award Number:1823919; Principal Investigator:Kimberly Scott; Co-Principal Investigator:Laura Schulz; Organization:Massachusetts Institute of Technology;NSF Organization:BCS Start Date:09/01/2018; Award Amount:\$584,445.00; Relevance:48.0;

[CAREER: Discovering the Underpinnings of Statistical Language Learning in Infants](#)
Award Number:1352443; Principal Investigator:Jill Lany; Co-Principal Investigator;; Organization:University of Notre Dame;NSF Organization:BCS Start Date:03/01/2014; Award Amount:\$765,239.00; Relevance:48.0;

[Neural measures of social reward and information value in infants](#)
Award Number:1627068; Principal Investigator:Rebecca Saxe; Co-Principal Investigator;; Organization:Massachusetts Institute of Technology;NSF Organization:BCS Start Date:07/15/2016; Award Amount:\$600,000.00; Relevance:48.0;

[Exploring the relation between non-spatial skills and mental rotation from infancy to preK](#)
Award Number:1823489; Principal Investigator:Marianella Casasola; Co-Principal Investigator:Lisa Oakes, Vanessa LoBue, Felix Thoemmes; Organization:Cornell University;NSF Organization:BCS Start Date:09/01/2018; Award Amount:\$756,655.00; Relevance:48.0;

[A Lifespan Conceptual Model of Ethnic-Racial Identity](#)
Award Number:1729711; Principal Investigator:Esther Calzada; Co-Principal Investigator:Adriana Umana-Taylor; Organization:University of Texas at Austin;NSF Organization:BCS Start Date:10/01/2017; Award Amount:\$24,369.00; Relevance:48.0;

[After-School Activities: Identifying Risk and Protective Factors for Community Violence Exposure](#)
Award Number:1348957; Principal Investigator:Rosario Ceballo; Co-Principal Investigator:Jacquelynne Eccles; Organization:University of Michigan Ann Arbor;NSF Organization:BCS Start Date:09/01/2014; Award Amount:\$474,997.00; Relevance:48.0;

[The Development of Relational Processing in Infancy](#)
Award Number:1729720; Principal Investigator:Susan Hesos; Co-Principal Investigator:Dedre Gentner, Kenneth Forbus; Organization:Northwestern University;NSF Organization:BCS Start Date:08/15/2017; Award Amount:\$596,080.00; Relevance:48.0;

[SBE-RCUK: CompCog: Modeling the Development of Phonetic Representations](#)
Award Number:1734245; Principal Investigator:Naomi Feldman; Co-Principal Investigator;; Organization:University of Maryland College Park;NSF Organization:BCS Start Date:09/01/2017; Award Amount:\$520,058.00; Relevance:48.0;

[Motor Exploration and Motor Learning During Child Development](#)
Award Number:1654929; Principal Investigator:Mei-Hua Lee; Co-Principal Investigator:Ferdinando Mussa-Ivaldi; Organization:Michigan State University;NSF Organization:BCS Start Date:03/01/2017; Award Amount:\$349,106.00; Relevance:48.0;

[Collaborative Research: Science of Learning Center: Visual Language and Visual Learning \(VL2\)](#)
Award Number:1041725; Principal Investigator:Thomas Allen; Co-Principal Investigator:Laura-Ann Pettito; Organization:Gallaudet University;NSF Organization:SMA Start Date:10/01/2011; Award Amount:\$8,864,066.00; Relevance:48.0;

[RR: Collaborative: Origins of Intergroup Perceptions and Attitudes Across Diverse Contexts](#)
Award Number:1728300; Principal Investigator:Kristin Pauker; Co-Principal Investigator;; Organization:University of Hawaii;NSF Organization:BCS Start Date:08/01/2017; Award Amount:\$90,121.00; Relevance:48.0;

[Supporting Undergraduate Participation at the International Conference on Infant Studies: 2016-2020](#)
Award Number:1551122; Principal Investigator:Martha Arterberry; Co-Principal Investigator:Samuel Putnam; Organization:Colby College;NSF Organization:BCS Start Date:03/01/2016; Award Amount:\$22,500.00; Relevance:48.0;

What has been funded through a particular program?

Click on a title to get the abstract

Find the Right Program: Abstracts of Awards Recently Made

Program Manager:	Chalandra Bryant BCS Division Of Behavioral and Cognitive Sci SBE Direct For Social, Behav & Economic Scie
Start Date:	September 1, 2018
End Date:	August 31, 2021 (Estimated)
Awarded Amount to Date:	\$756,655.00
Investigator(s):	Marianella Casasola mc272@cornell.edu (Principal Investigator) Lisa Oakes (Co-Principal Investigator) Vanessa LoBue (Co-Principal Investigator) Felix Thoemmes (Co-Principal Investigator)
Sponsor:	Cornell University 373 Pine Tree Road Ithaca, NY 14850-2820 (607)255-5014
NSF Program(s):	DS - Developmental Sciences
Program Reference Code(s):	1698
Program Element Code(s):	1698

ABSTRACT

Mental rotation, the ability to mentally manipulate a visual representation of an object and recognize its appearance from a different orientation, shows stability from infancy through preschool. This ability predicts mathematical achievement in kindergarten and beyond as well as entry into the Science, Technology, Engineering, and Mathematics (STEM) fields. The present work focuses on identifying how non-spatial processes contribute to mental rotation abilities. Findings will help identify ideal time points for intervention, advance understanding of the factors that contribute to mental rotation, and address how individual differences in mental rotation during infancy predict later abilities. This work will involve the creation and refinement of measures that can be used to trace the development of mental rotation from infancy into preschool; thereby, not only contributing new tools to the field, but also yielding insights that can inform current theoretical conceptions of mental rotation and its relation to non-spatial processes.

The critical research question is as follows: What are the non-spatial processes that contribute to mental rotation abilities and their development? Associations between mental rotation, object features, processing bias, and motor experience will be examined using a cross-sequential design with overlapping age cohorts. The investigators will recruit an infant cohort at 8 months, a toddler cohort at 20 months, and a preschool cohort at 3 years. Each cohort will be assessed at three time points -- every six months for infants (i.e., 8, 14, and 20 months), every 8 months for toddlers (i.e., 20, 28, and 36 months), and every year for preschoolers (3, 4, and 5 years). When examined at a specific age, the sample will provide a snapshot into the association between mental rotation and non-spatial skills (i.e., object features, processing bias, and motor experience). The longitudinal design will allow the investigators to follow participants across infancy, toddlerhood, or the preschool years. This approach provides an opportunity to understand how non-spatial skills, such as more precocious motor skills during infancy, may shape mental rotation over time. Such findings are central to bolstering understanding of the possible mechanisms by which particular types of

You can review the abstracts of awards made through a particular program.

Note:

- Program Manager
- Duration
- Awarded amount
- Co-funded?
- Topic area

Co-review?

- Submit one proposal to multiple programs (Note: some programs do not co-review)
- Choose programs on the Cover Page
- Will go to more than one review panel
- Possible outcomes:
 - Both programs fund
 - Neither program funds
 - One program funds
- Reviews from multiple perspectives lead to better science.

Before you apply... READ!!!

SBE Postdoctoral Research Fellowships (SPRF)

PROGRAM SOLICITATION
NSF 17-588

REPLACES DOCUMENT(S):
NSF 16-590



National Science Foundation
Directorate for Social, Behavioral & Economic Sciences
SBE Office of Multidisciplinary Activities

Full Proposal Deadline(s) (due by 5 p.m. submitter's local time):
November 01, 2017

October 09, 2018

Second Tuesday in October, Annually Thereafter

IMPORTANT INFORMATION AND REVISION NOTES

The FY 2018 solicitation underwent minor revisions to clarify the requirements of the solicitation and decrease burden on applicants.

- Eligibility information has been revised. Specification that the doctoral degree be obtained in the SBE sciences and justification for remaining at one's doctoral-granting institution were added.
- The sponsoring scientist must be listed as a Co-PI on the proposal's Cover Sheet.
- Award tenure start dates were amended to include the 15th of the month.
- The requirement for two reference letters on the Fellowship candidate has been removed.
- Guidance for registering as an individual in Facilities and completing the Cover Sheet, Project Summary, Project Description, Budget Sheet, Budget Justification, Current and Pending Support, the Postdoctoral Mentoring Plan, and the new Collaborations and Other Affiliations information template were added.

Any proposal submitted in response to this solicitation should be submitted in accordance with the revised NSF Proposal & Award Policies & Procedures Guide (PAPPG) (NSF 18-1), which is effective for proposals submitted, or due, on or after January 29, 2018.

SUMMARY OF PROGRAM REQUIREMENTS

General Information

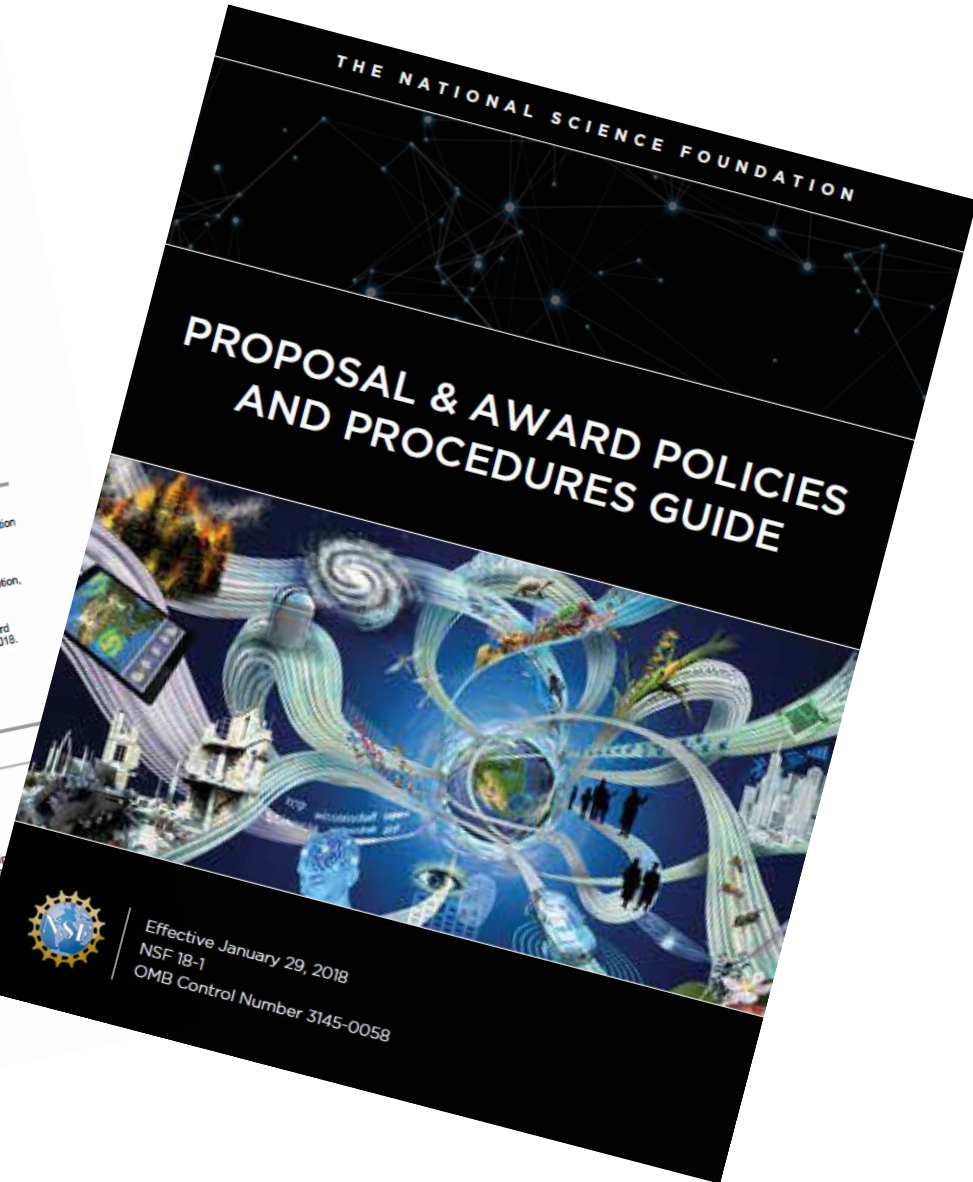
Program Title:
SBE Postdoctoral Research Fellowships (SPRF)

Synopsis of Program:

The Directorate for Social, Behavioral and Economic Sciences (SBE) offers Postdoctoral Research Fellowships to encourage independence early in the Fellow's career through supporting his or her research and training graduate research and training plan of each Fellowship must address important scientific questions within the scope of SBE Directorate and the specific guidelines in this solicitation. The SPRF program offers two tracks: (I) Full Research in the SBE Sciences (SPRF-FR) and (II) Encouraging Participation in the SBE Sciences (SPRF-EP). For the full text of the solicitation for a detailed description of these tracks.

Cognizant Program Officer(s):

Please note that the following information is current at the time of publishing. See program website for any updates.
• Josie S. Welkom - Acting Program Officer, telephone: (703) 292-7376, email: jwelkom@nsf.gov



Effective January 29, 2018
NSF 18-1
OMB Control Number 3145-0058

Next Steps: Tips for Contact

After you have narrowed down to programs that match your area of research and you have read the program page and (solicitation):

Reach out to the Program Director by EMAILING a 1 or 2 page summary of your planned research project (IM and BI). Get feedback about project fit with program goals and ask any specific questions you have.

Email ALL relevant programs and program directors in a SINGLE email. This is common for correspondence with NSF programs.

Follow up if you haven't heard back in a week.

Programs may offer Zoom appointments, office hours, or webinars as well.

Common Pitfalls to Avoid in SBE Proposals

Overlooking key aspects of the program announcement and requirements.

Relying on advice from people who work only with other Directorates.

Lacking specificity about methods and how hypotheses relate to relevant theory.

Underdeveloped or vague data analysis plan.

Disconnect between framing/motivation and proposed activity.

Failing to establish feasibility.

Not tailoring your proposal to the appropriate audience (disciplinary vs. multidisciplinary panel).

NSF Merit Review Criteria

NSF 21-059

Dear Colleague Letter: A Broader Impacts Framework for Proposals Submitted to NSF's Social, Behavioral, and Economic Sciences Directorate

March 18, 2021

Dear Colleagues:

The National Science Foundation (NSF) supports fundamental research in the social, behavioral, and economic (SBE) sciences. This research empowers our Nation to address great challenges and seize transformative opportunities. Through scientific advances and subsequent applications of these advances, SBE-supported research strengthens security and preparedness, creates jobs, spurs innovation, and improves quality of life for people across the country and around the world.

<https://www.nsf.gov/pubs/2021/nsf21059/nsf21059.jsp>

Thank You! Questions?

- It may be helpful if you start by telling me who you are and what your role is:
 - Political science faculty member at xxxxx.
 - Ph.D. student in Business Information Systems at xxxx.
 - I work in the Economics Department at zzzz and I help the faculty with grants.
 - I'm in the sponsored research office at yyyy.
 - I'm an Associate Provost for Research.
- Email address for follow-up correspondence: **jkoster@nsf.gov**